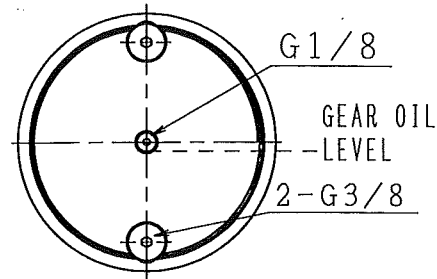


NACHI

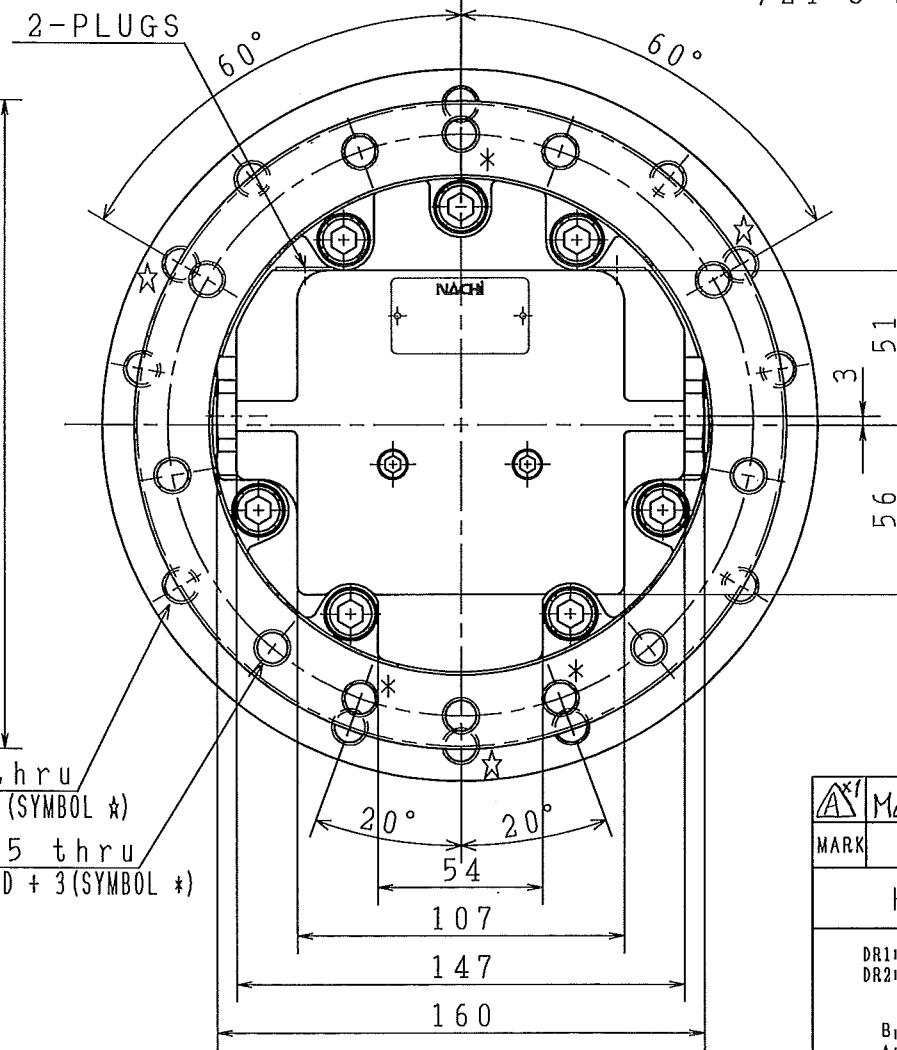
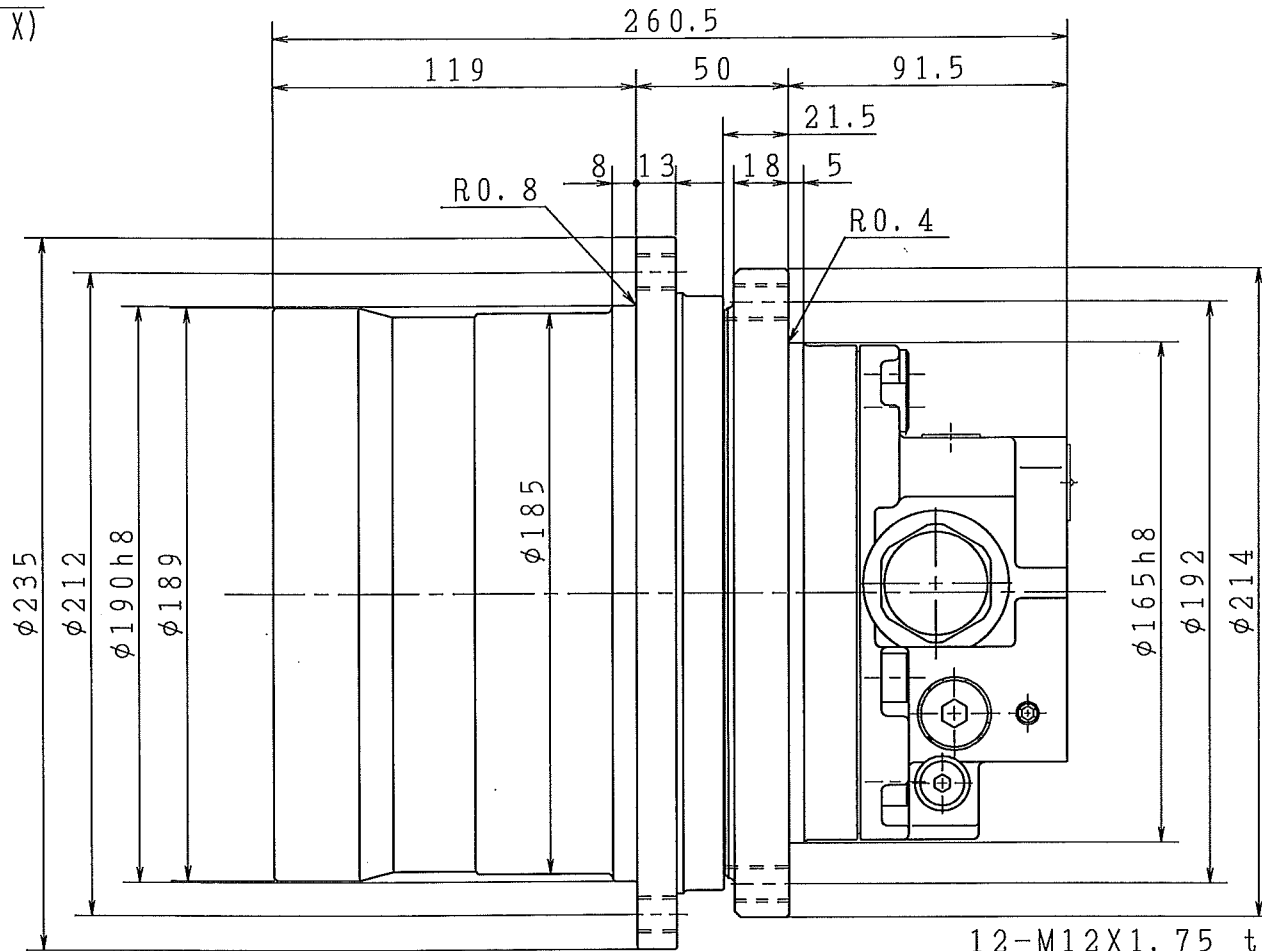
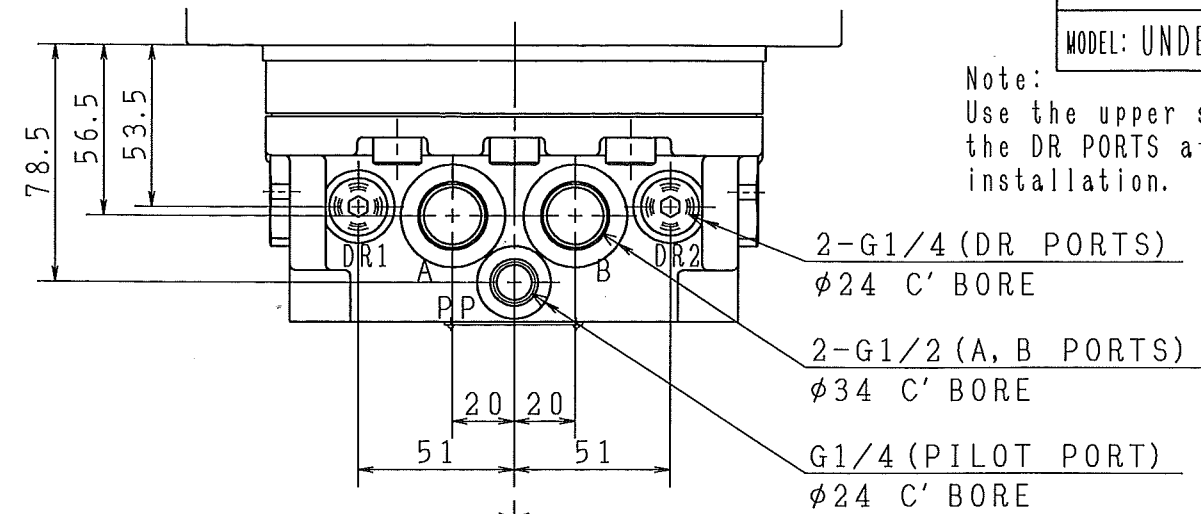


GEAR OIL LEVEL
(VIEWED FROM X)

Note
Please connect 'PP port' to 'DR line'.
If PP port is blocked, the pressured oil is filled in PP line.
Therefore, the track motor changes its speed to Hi mode.

MESSRS: TFW AG
MODEL: UNDERCARRIAGE

Note:
Use the upper side of the DR PORTS after installation.



SPECIFICATION (THEORETICAL)

Hi speed specification is filled in (), because it doesn't use.

SPEED REDUCER	MAX. OUTPUT TORQUE	2209 N·m (225.2 kgf·m)	DISPLACEMENT/FINAL REVOLUTION	806.9/(419.9) cm ³ /rev	
	MAX. OUTPUT SPEED	23.8/(45.7) min ⁻¹			
	GEAR RATIO	1/36.51			
HYDRAULIC MOTOR	DISPLACEMENT	22.1/(11.5) cm ³ /rev	OTHER	OIL	ISO VG46
	MAX. OPERATING PRESSURE	17.2 MPa (175 kgf/cm ²)		OIL TEMP.	-20~100 °C
	MAX. OUTPUT SPEED	869/(1670) min ⁻¹		FILTER	10 μm
	MAX. FLOW	19.2 l/min		GEAR OIL	SAE-30-CD
	PARKING BRAKE STATIC FRICTION TORQUE	55.9 N·m (5.7 kgf·m)		AMOUNT OF OIL	600 cm ³
	PARKING BRAKE RELEASING PRESSURE	1.9 MPa (19 kgf/cm ²)		MASS	36 kg
	SPEED CONTROL PRESSURE	1.5 MPa (15 kgf/cm ²)		PAINT COLOR	UNDER COAT: RED TOP COAT: —
RELIEF VALVE	CRACKING PRESSURE	— MPa at — l/min (— kgf/cm ²)			
	SETTING PRESSURE	— MPa at — l/min (— kgf/cm ²)			

12-M12X1.75 thru 9 UNIFORMLY DISTRIBUTED + 3(SYMBOL ☆)
12-M12X1.75 thru 9 UNIFORMLY DISTRIBUTED + 3(SYMBOL ☆)

ALLOWED DRAIN PRESSURE

RATED	0.3 MPa (3 kgf/cm ²)
MAX.	1.0 MPa (10 kgf/cm ²)

ROTATIONAL DIRECTION (VIEWED FROM OUTPUT SIDE)

	INLET	OUTLET
CLOCKWISE	B	A
COUNTER-CLOCKWISE	A	B



MARK	Mass Production (Del.-Z)	Jul.13.10	H. Kubota
REVISION		DATE	BY
HYDRAULIC SYMBOL			
MODEL NO.	PHV-3B-35A-P-9018Z A		
NAME	WHEEL MOTOR		
DWG. NO.	FZD-9018ME-1 Z		

COPYING OF THIS DOCUMENT, AND GIVING IT TO OTHERS AND THE USE OR COMMUNICATION OF THE CONTENTS THEREOF, ARE FORBIDDEN WITHOUT EXPRESS AUTHORITY.

図号: AHP, FZD8/AA-JIS-E NEW, PH-8
図面: AHP, FZD8/MHV3 P 9018Z, JK84

