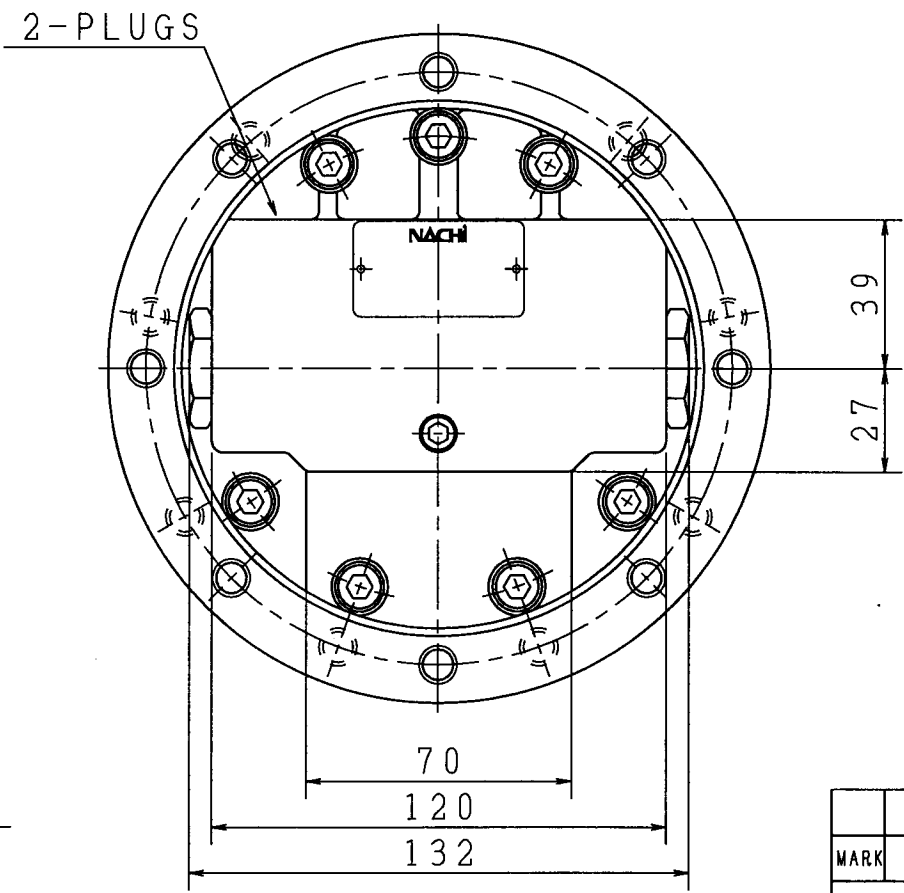
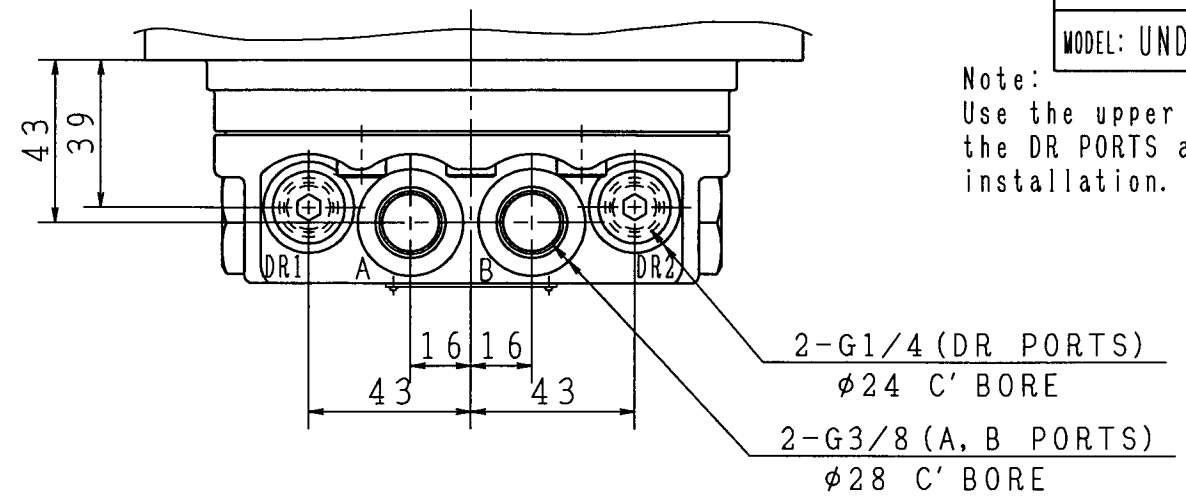
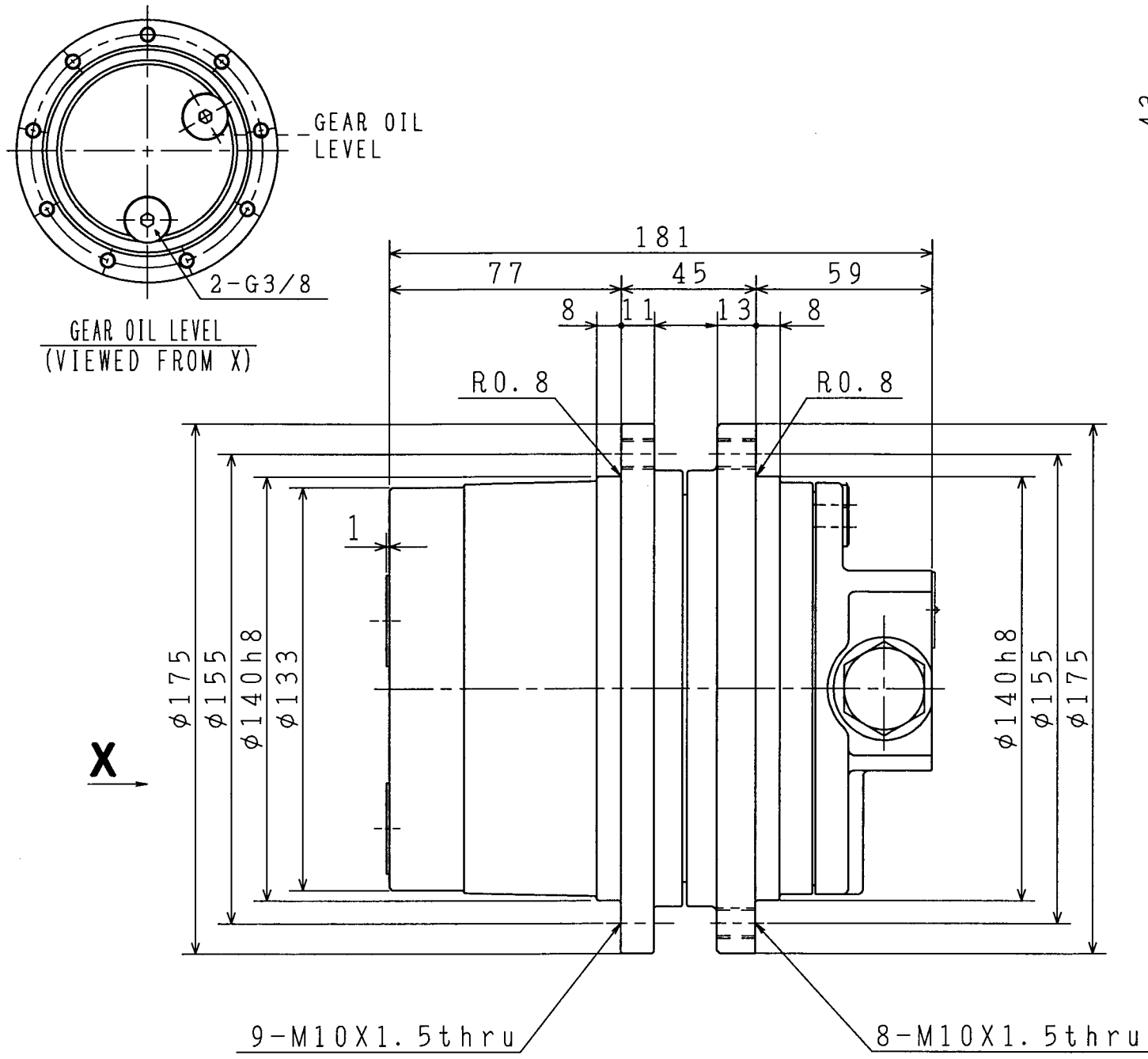


Note:  
Use the upper side of  
the DR PORTS after  
installation.



**SPECIFICATION (THEORETICAL)**

SPEED REDUCER	MAX. OUTPUT TORQUE	1274 N·m { 129.9 kgf·m}	DISPLACEMENT/FINAL REVOLUTION	421.3 cm <sup>3</sup> /rev	
	MAX. OUTPUT SPEED	38.0 min <sup>-1</sup>			
	GEAR RATIO	1/36.96			
HYDRAULIC MOTOR	DISPLACEMENT	11.4 cm <sup>3</sup> /rev	OTHER	OIL	ISO VG46
	MAX. OPERATING PRESSURE	19.0 MPa { 194 kgf/cm <sup>2</sup> }		OIL TEMP.	-20~100 °C
	MAX. OUTPUT SPEED	1404 min <sup>-1</sup>		FILTER	10 μm
	MAX. FLOW	16.0 l/min		GEAR OIL	SAE-30-CD
	PARKING BRAKE STATIC FRICTION TORQUE	16.7 N·m { 1.7 kgf·m}		AMOUNT OF OIL	330 cm <sup>3</sup>
	PARKING BRAKE RELEASING PRESSURE	1.4 MPa { 14 kgf/cm <sup>2</sup> }		MASS	16 kg
	SPEED CONTROL PRESSURE	— MPa { — kgf/cm <sup>2</sup> }		PAINT COLOR	UNDER COAT: RED
RELIEF VALVE	CRACKING PRESSURE	— MPa at l/min { — kgf/cm <sup>2</sup> }	TOP COAT:	—	
	SETTING PRESSURE	— MPa at l/min { — kgf/cm <sup>2</sup> }			

ALLOWED DRAIN PRESSURE

RATED	0.3 MPa { 3 kgf/cm <sup>2</sup> }
MAX.	1.0 MPa { 10 kgf/cm <sup>2</sup> }

ROTATIONAL DIRECTION (VIEWED FROM OUTPUT SIDE)

	INLET	OUTLET
CLOCKWISE	A	B
COUNTER-CLOCKWISE	B	A

MARK	REVISION	DATE	BY
HYDRAULIC SYMBOL			
MODEL NO.	PHK-1B-12B-P-9017A		
NAME	WHEEL MOTOR		
DWG. NO.	FZD-9017ME-1		