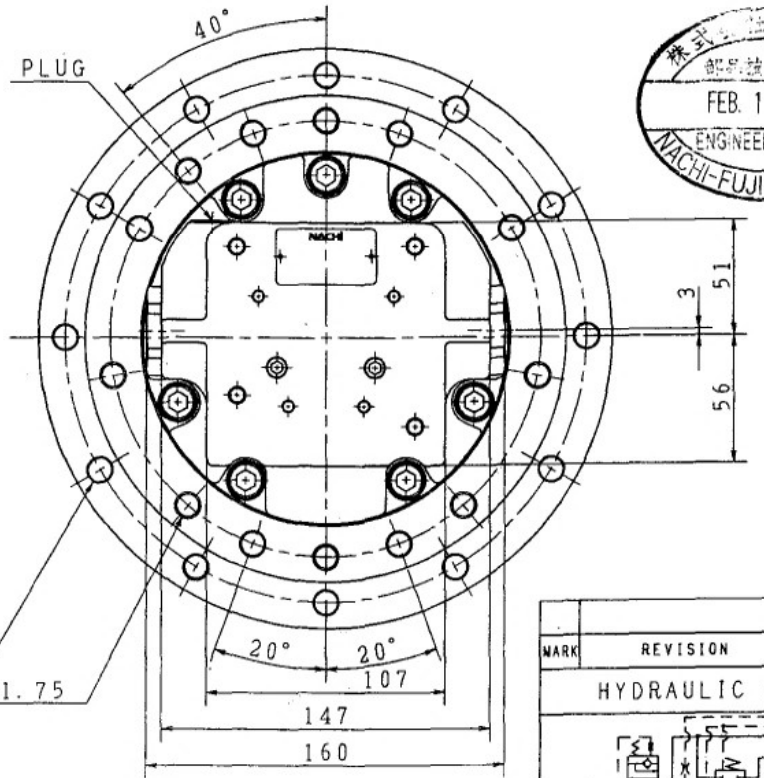
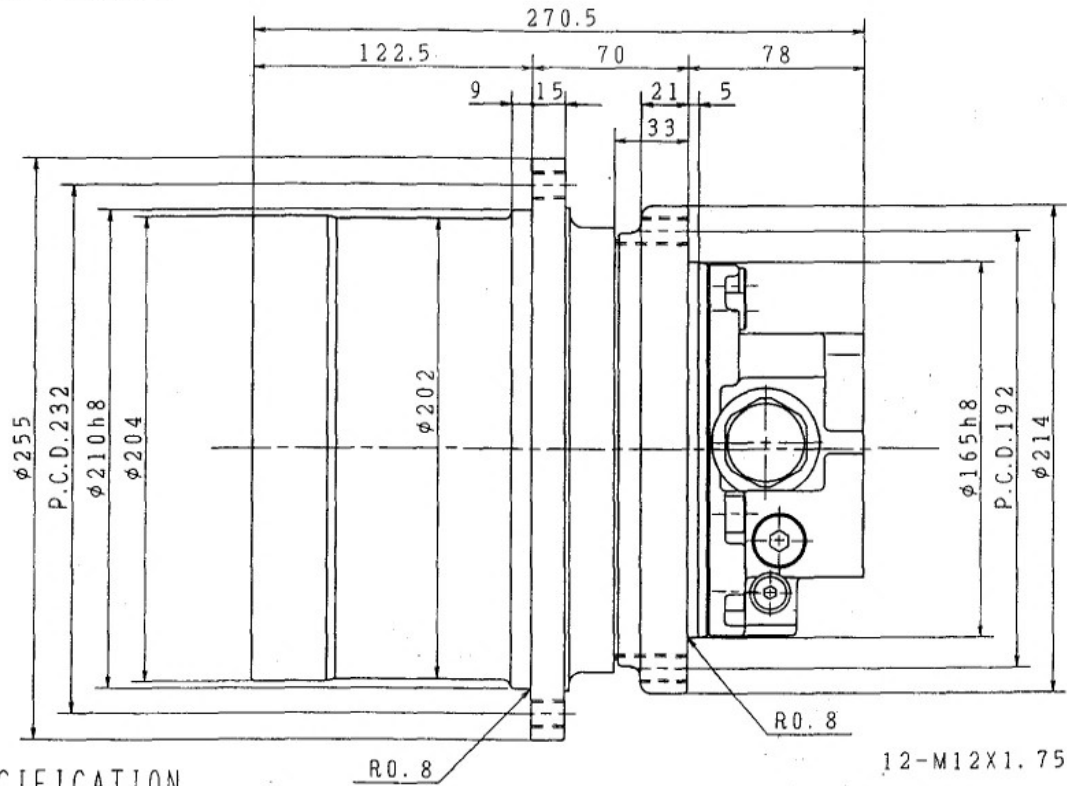


OIL LEVEL & DRAIN PLUG



SPECIFICATION

SPEED REDUCER	MAX. OUTPUT TORQUE	3570 N·m (364 kgf·m)	DISPLACEMENT/FINAL REVOLUTION	1244.4/748.8 cm ³ /rev	
	MAX. OUTPUT SPEED	39.4/64.8 min ⁻¹			
	GEAR RATIO	1/52.73			
HYDRAULIC MOTOR	DISPLACEMENT	23.6/14.2 cm ³ /rev	OTHER	OIL	ISO VG46
	MAX. OPERATING PRESSURE	21 MPa (214 kgf/cm ²)		OIL TEMP.	-20~100 °C
	MAX. OUTPUT SPEED	2076/3415 min ⁻¹		FILTER	10 μm
	MAX. FLOW	50 l/min		GEAR OIL	
	PARKING BRAKE STATIC FRICTION TORQUE	1.5 N·m (15 kgf·m)		AMOUNT OF OIL	700 cm ³
	PARKING BRAKE RELEASING PRESSURE	27.5 MPa (278 kgf/cm ²)		MASS	43 kg
	SPEED CONTROL PRESSURE	1.5 MPa (15 kgf/cm ²)		PAINT COLOR	UNDER COAT: RED TOP COAT: —
RELIEF VALVE	CRACKING PRESSURE	— MPa at 1/min (— kgf/cm ²)			
	SETTING PRESSURE	— MPa at 1/min (— kgf/cm ²)			

ALLOWED DRAIN PRESSURE

RATED	0.3 MPa (3 kgf/cm ²)
MAX.	1.0 MPa (10 kgf/cm ²)

ROTATIONAL DIRECTION (VIEWED FROM OUTPUT SIDE)

	INLET	OUTLET
CLOCKWISE	B	A
COUNTER-CLOCKWISE	A	B

MARK	REVISION	DATE	BY
HYDRAULIC SYMBOL			
MODEL NO.	PHV-390-53B-1-8525A		
NAME	WHEEL MOTOR		
DWG. NO.	FZD-8525ME-1		

