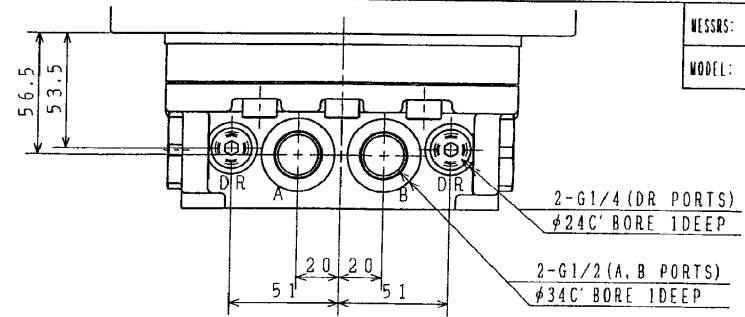
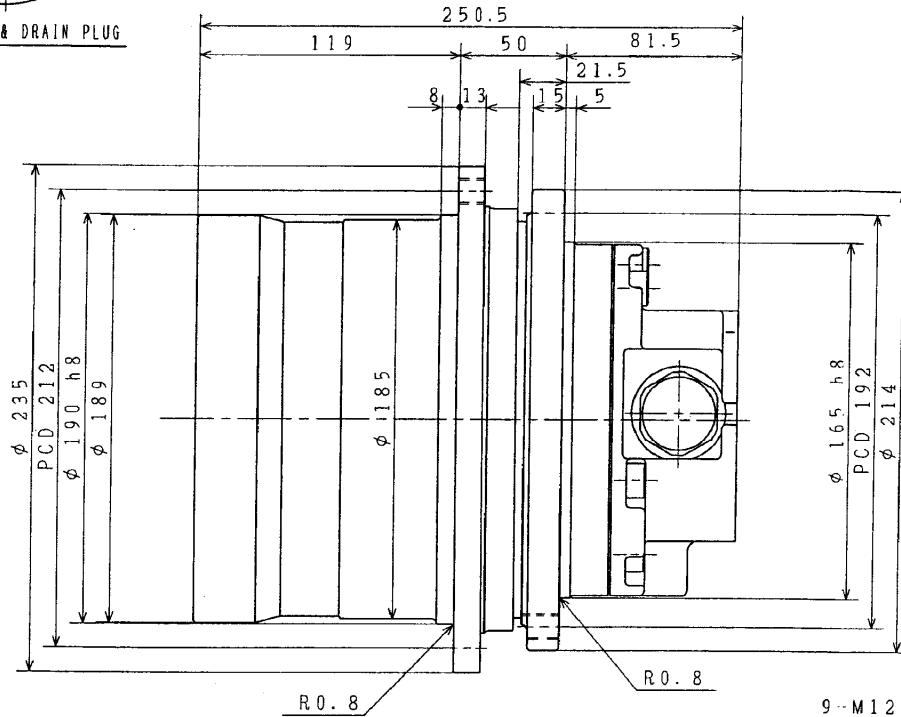
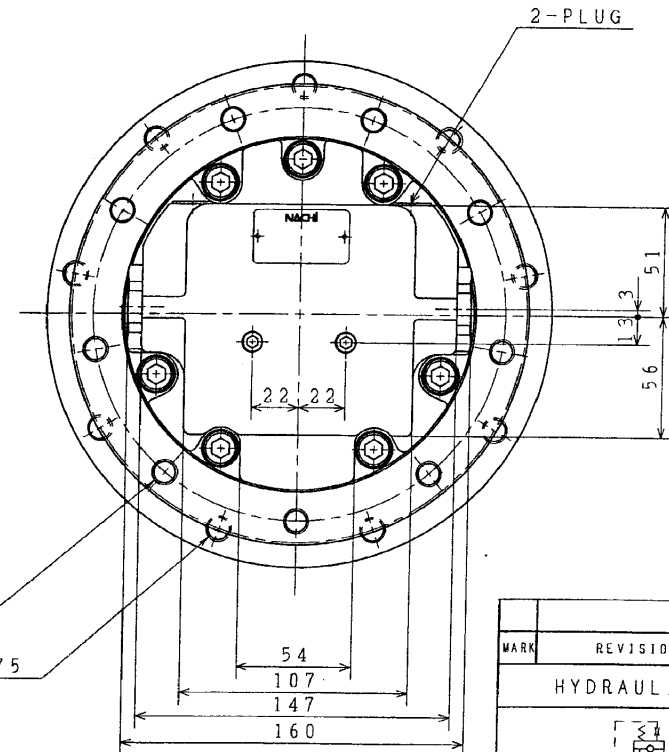


OIL LEVEL & DRAIN PLUG



NESSRS: TFW
MODEL:

2-G1/4 (DR PORTS)
#24C' BORE 1DEEP
2-G1/2 (A, B PORTS)
#34C' BORE 1DEEP



9-M12X1.75

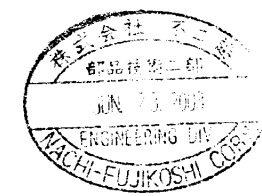
9-M12X1.75

SPECIFICATION

SPEED REDUCER	MAX. OUTPUT TORQUE	185.4 N·m 189 kgf·m	DISPLACEMENT/TOTAL REVOLUTION	806.9 cm ³ /rev	
	MAX. OUTPUT SPEED	23.3 min ⁻¹			
	GEAR RATIO	1/36.51			
HYDRAULIC MOTOR	DISPLACEMENT	22.1 cm ³ /rev	OTHER	OIL	SAE-10W-CD
	MAX. OPERATING PRESSURE	17.2 MPa 175 kgf/cm ²		OIL TEMP.	-20~100 °C
	MAX. OUTPUT SPEED	851 min ⁻¹		FILTER	10 μm
	MAX. FLOW	19.2 l/min		GEAR OIL	SAE-30-CD
	PARKING BRAKE STATIC FRICTION TORQUE	29.4 N·m 3.0 kgf·m		AMOUNT OF OIL	600 cm ³
	PARKING BRAKE RELEASING PRESSURE	2.0 MPa 20 kgf/cm ²		MASS	30 kg
	SPEED CONTROL PRESSURE	MPa kgf/cm ²		PAINT COLOR	UNDER COAT: RED
RELIEF VALVE	CRACKING PRESSURE	MPa at l/min kgf/cm ²	TOP COAT:		
	SETTING PRESSURE	MPa at l/min kgf/cm ²			

ALLOWED DRAIN PRESSURE	
RATED	0.3 MPa 3 kgf/cm ²
MAX.	1.0 MPa 10 kgf/cm ²

ROTATIONAL DIRECTION (VIEWED FROM OUTPUT SIDE)	
CLOCKWISE	B A
COUNTER-CLOCKWISE	A B



MARK	REVISION	DATE	BY
HYDRAULIC SYMBOL			
MODEL NO.	PHK-290-37B-1-8071B		
NAME	WHEEL MOTOR		
FIG. NO.	FZD-8071M-2		